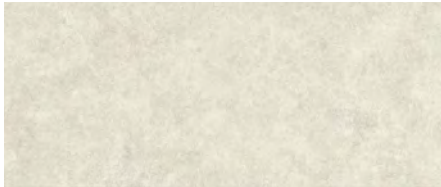


# BOOST ICOR - Ceramic Walls

**General:** Boost Icor was created by Marco Casamonti of Archea Associates and has been inspired by Limestone. Created in two natural colours to co-ordinate with Boost Icor porcelain floor & wall proposals, these three decor finishes create harmonious interest as decorative walls.

**Applications:** All commercial and residential applications for wall ONLY.

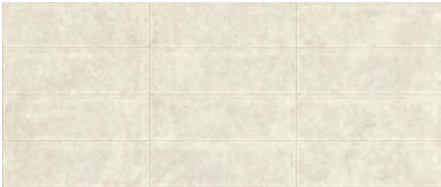
BONE Field 500 x 1200 x 8.5mm



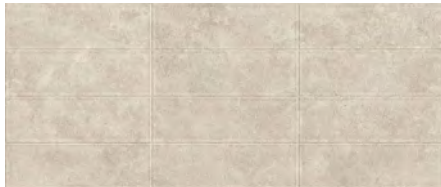
DUST Field 500 x 1200 x 8.5mm



BONE 3D Masonary 500 x 1200 x 10mm



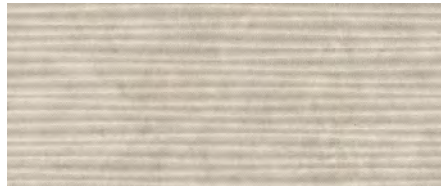
DUST 3D Masonary 500 x 1200 x 10mm



BONE 3D Wheat 500 x 1200 x 10mm



DUST 3D Wheat 500 x 1200 x 10mm



**Origin:** Italy

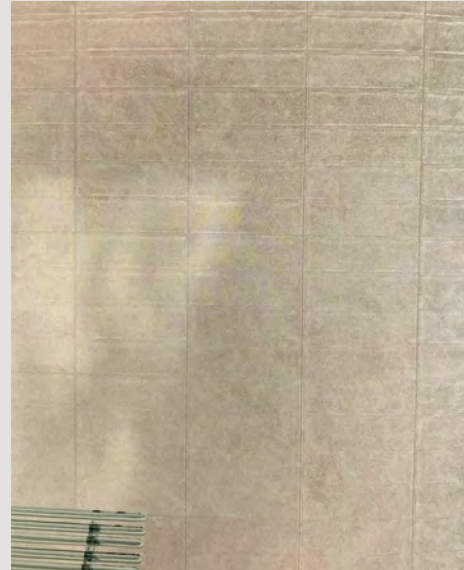
**Availability:** FIELD finish in Matt 500 x 1200 x 8.5mm  
3D MASONARY finish in Matt 500 x 1200 x 10mm  
3D WHEAT finish in Matt 500 x 1200 x 10mm

**Appearance:** Elegant Limestone

**Production:** Pressed & Rectified ceramic

**Technical:** Fire and Frost Resistant  
Chemical and Stain Resistant  
Water porosity – less than 0.10%  
Scratch resistant

DUST 3D Masonary 500 x 1200 x 10mm



DUST 3D Wheat 500 x 1200 x 10mm

