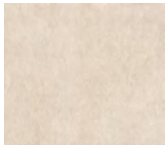


BOOST STONE

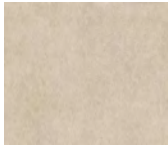
General: Boost Stone takes the range of concrete colours found in the Boost series and replicates them into a stone collection with the subtle variations of mottled natural stone. These warm collection of porcelain stoneware provides a modern elegance to any residential or commercial environment - and with amazing durability & density.

Applications: All commercial and residential applications for both floor and wall. Create various edge detailing & laminations for steps, pool surrounds / copings, as well as custom internal & external designs.

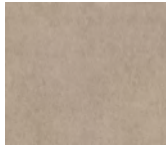
IVORY



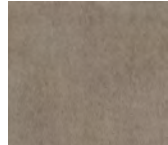
CREAM



CLAY



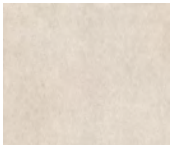
TAUPE



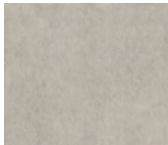
TOBACCO



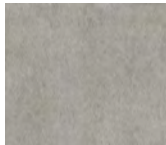
WHITE



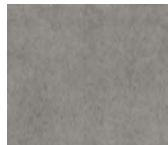
PEARL



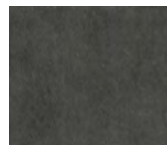
GREY



SMOKE



TARMAC



Suppliers of the finest

porcelain stoneware

info@csaustralia.com.au

www.ceramicsurfacesaustralia.com.au

Origin: Italy

Availability: Matte
 1200 x 1200 x 9mm 600 x 600 x 9mm
 600 x 1200 x 9mm 300 x 600 x 9mm

6mm Slabs Matte
 1200 x 2780 x 6mm*

*Special production can be produced to meet P3 requirements for these slabs

Grip
 600 x 1200 x 9mm
 300 X 600 X 9mm

Paver Grip in 20mm
 1200 x 1200 x 20mm
 600 x 1200 x 20mm
 600 x 600 x 20mm

Type: Full colour body

Appearance: Stone

Production: Pressed & Rectified porcelain

Technical: Fire and Frost Resistant
 Chemical and Stain Resistant
 Water porosity – less than 0.05%
 Scratch resistant

Slip Resistance: Matte 9mm : P3

Matte 6mm : Special production can be produced to meet P3 requirements for these slabs

Grip 9mm : P5

Paver Grip 20mm : P5