

KERLITE LITHOS

General: The new evolution of stone see the Lithos series as an original aesthetic. This unique stone combines the appearances of the rarest marbles in a variety of surfaces to look, touch and feel authentic. Lithos represents the extraordinary ability to devise new and sensational stone like finishes, and is part of the PROTECT® line of products: antimicrobial floor and wall tiles, designed for healthy, safe and protected living spaces.

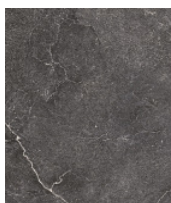
Applications: Commercial & residential in & out doors, including foyers, boutiques, galleries, living areas, balconies, patios, kitchens, bathrooms, walls and step treads (with lamination and various edge detail finishes being achieved).

CARBON

DESERT

MOON

STONE



Suppliers of the finest

porcelainstoneware

info@cсаustralia.com.au

www.ceramicsurfacesaustralia.com.au

Origin:	Italy
Colours:	Carbon / Desert / Moon / Stone
Availability:	Kerlite 6.5mm Thickness: 600 x 1200 x 6.5mm Natural / Soft 1200 x 1200 x 6.5mm Natural / Soft 1200 x 2600 x 6.5mm Natural / Soft
Type:	Full Colour Body Porcelain
Appearance:	Natural stone shades
Production:	Special production, rectified edges
Technical:	PROTECT Antibacterial technology Inkjet HD 3D Water Absorption less than 0.02% Frost Resistant Stain Resistant & Chemical Resistant Fire Retardant
Slip Resistance:	Natural P3
Guarantee:	20 Years – for domestic & commercial applications